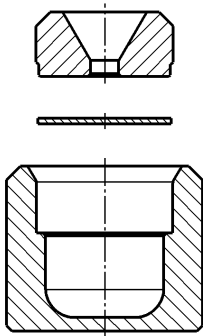


## High pressure crucibles for thermal analysis

### High pressure crucible sets

#### Typ S50



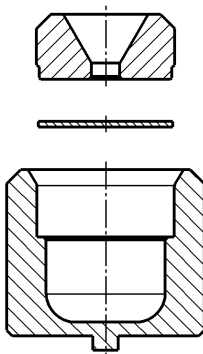
#### Standard

high pressure crucible without location pin  
with lid and  
seal Ø 4.75 x 0.2 mm ( gold)

dimensions: external diameter 7 mm  
height 5.9 mm  
gold plated 5 µm  
volume 50 µl  
number of parts 3

pressure tightness with water 200bar (max. 217 bar)  
maximum temperatur 400°C

#### Typ S50 plus



#### Standard

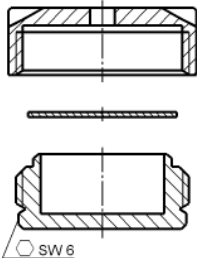
high pressure crucible with location pin  
with lid and  
seal Ø 4.75 x 0.2 mm ( gold)

dimensions: external diameter 7 mm  
height 5.9 mm  
gold plated 5 µm  
volume 50 µl  
number of parts 3

pressure tightness with water 200bar (max. 217 bar)  
maximum temperatur 400°C

## High pressure crucible sets to screw

### Typ BFT 93

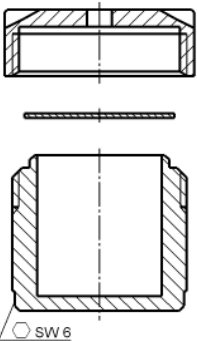


high pressure crucible without location pin with screw cap and seal  $\varnothing$  6.15 x 0.25 mm ( gold)

dimensions: external diameter 7.6 mm  
height with lid 3.9 mm  
crucible gold plated 5  $\mu$ m  
volume 30  $\mu$ l  
number of parts 3

torque 3.7 Nm  
pressure tightness to 270 bar

### Typ BFT 94



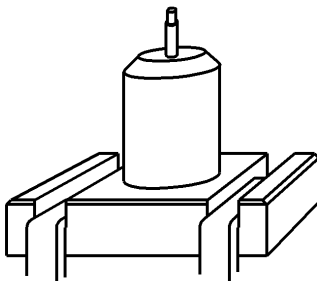
high pressure crucible without location pin with screw cap and seal  $\varnothing$  6.15 x 0.25 mm ( gold)

dimensions: external diameter 7.6 mm  
height with lid 7.2 mm  
crucible gold plated 5  $\mu$ m  
volume 100  $\mu$ l  
number of parts 3

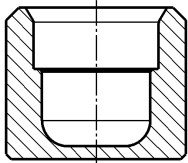
torque 3.7 Nm  
pressure tightness to 270 bar

## Assembling tool for BFT 93 and BFT 94

Part list: torque key 1-6 Nm  
screwdriver  
screwdriver guidance  
mounting plate with hexagon retainer for crucible  
table fixing device

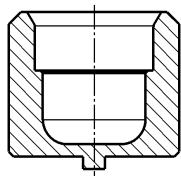


## High pressure crucible single parts



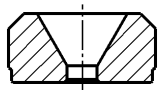
**5001** high pressure crucible uncoated without location pin

**5002** high pressure crucible gold plated 5 µm without location pin  
dimensions: Ø 7 mm x 5.9 mm  
volume 50 µl

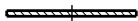


**6001** high pressure crucible uncoated with location pin

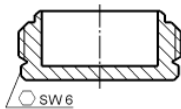
**6002** high pressure crucibles gold plated 5 µm with location pin  
dimensions: Ø 7 mm x 5.9 mm  
volume 50 µl



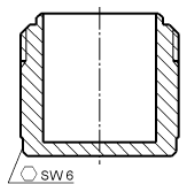
**7002** lid gold plated 5 µm



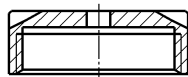
**7003** seal Ø 4.75 x 0.2 mm (gold)



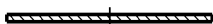
**8001** high pressure crucibles to screw without location pin  
gold plated 5 µm  
dimension: Ø 7 x 3 mm  
volume 30 µl



**9001** high pressure crucibles to screw without location pin  
gold plated 5 µm  
dimensions: Ø 7 x 6.3 mm  
volume 100 µl



**7006** screw cap uncoated



**7007** seal Ø 6.15 x 0.25 mm (gold)